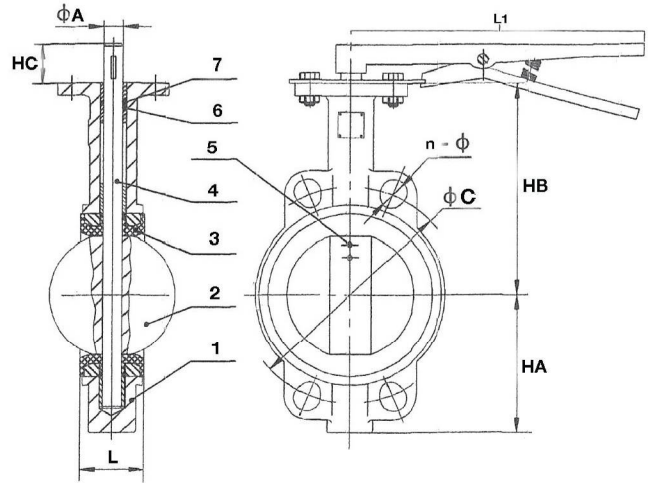
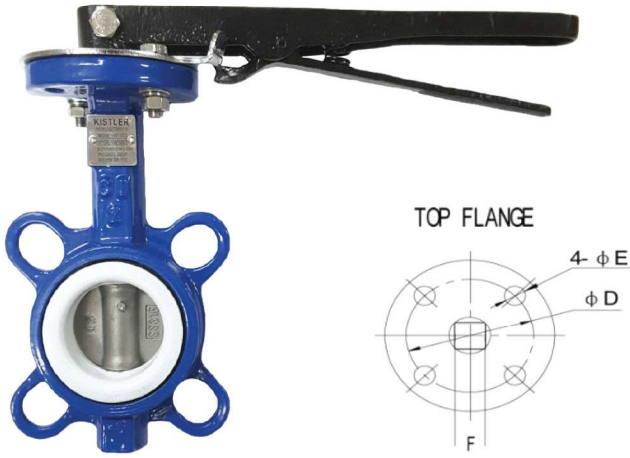


RESILIENT SEAT BUTTERFLY VALVE

Fig. BFV100L - WAFER Cast Iron Body Lever Operated
BFV100G - WAFER Cast Iron Body Gear Operated



FEATURE

1. Small in size, light in weight. Easy installation & maintenance.
2. Simple and compact construction, quick 90 degrees on-off operation. Minimized operating torque, energy saving.
3. Long service life. Bubble-tight sealing with no leakage under the pressure test.
4. One piece shaft design ensures rigidity and stability of the shaft or disc assembly and minimize disc stress.
5. The operator top flange conforms to ISO5211 which Electric or Pneumatic actuator that have ISO5211 flange can be directly mounted.

MATERIALS

NO.	PART NAME	SPECIFICATION
1	Body	Cast Iron (A126 Class B)
2	Disc	Stainless Steel 316 (CF8M)
3	Seat	PTFE
4	Stem	Stainless Steel ASTM 410
5	Taper Pin	Stainless Steel 316 (CF8M)
6	Bushing	PTFE
7	O-ring	EPDM

PERFORMANCE

Nominal Diameter (mm.)		2"(50mm.) - 12"(300mm.)
Max.Working Pressure		16 bar (232 psi.)
Max.Working Temperature		-10°C + 150°C
Testing Pressure	Body	24 bar (348 psi.)
	Seat	17.6 bar (255 psi.)

DIMENSIONS

Unit : mm.

DN (mm)	INCH	L	HA	HB	HC	Ø A	F	Ø D	4 - Ø E	L1	C
50	2"	43	80	140	30/32	11	11x11	F07	4-19	266	
65	2.1/2"	46	89	150	30/32	11	11x11	F07	4-19	266	
80	3"	46	95	158	30/32	11	11x11	F07	4-19	266	
100	4"	52	114	176	30/32	11	11x11	F07	4-23	266	
125	5"	56	127	190	30/32	14	14x14	F07	4-23	Gear	This dimension
150	6"	56	139	211	30/32	14	14x14	F07	4-23	Gear	can be acc to BS5155,
200	8"	60	175	235	40/45	17	17x17	F10	4-25.4	Gear	JIS10K, ANSI 125/150
250	10"	68	203	265	- /45	22	22x22	F10	4-25.4	Gear	DIN PN10/PN16,
300	12"	78	242	305	- /45	22	22x22	F10	4-28.4	Gear	UNI Standard,etc.
350	14"	78	267	368	- /45	22	22x22	F10	4-28.4	Gear	
400	16"	102	321	405	- /52	27	27x27	F14	4-28.4	Gear	
450	18"	114	328	422	- /52	27	27x27	F14	4-31.8	Gear	
500	20"	127	361	480	- /65	36	36x36	F14	4-31.8	Gear	
600	24"	154	459	562	- /70	36	36x36	F16	4-35.1	Gear	